

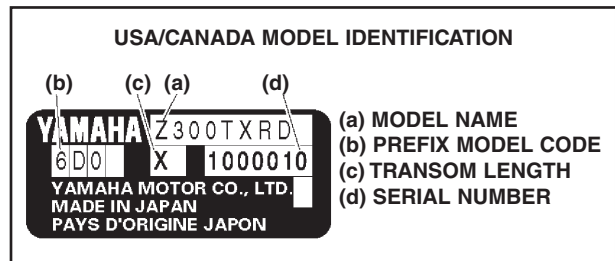
**OUTBOARD MODEL CODES**

1984 TO 1990 CODE GUIDE				
150 Prop Shaft Horsepower	E Electric Start	T Power Tilt or Power Trim & Tilt	L Lower Unit Shaft Length	D Model Year
Examples 9.9 15 200			S = 15" (UR Short) L = 20" (UR Long) X = 25" (UR Ultra Long) J = Jet Drive Lower Unit  (UR = User Required)	N = 1984 K = 1985 J = 1986 H = 1987 G = 1988 F = 1989 D = 1990

**Four-Stroke Models:**

Standard four-stroke models are identified by an "F" before the 9.9 power rating. High thrust four-stroke models are identified by a "T" before the 9.9 power rating.

**Special Models:** Some special models were produced that did not follow the above model designation procedure. These were the V6 Special (220hp), V6 Excel (225hp), CV and the PRO models. Each of these models did include shaft length and year indicators in their model names



**NOTE:** Early models, 1984 to 1986, also had a factory production model variation code marked on the engine similar to: 150AETO. This code does not contain any model year indicator and can be ignored.

**Pay special attention to every section of the model code.**

1991 TO 2005 CODE GUIDE						
V Model	X Fuel Injected	150 Prop Shaft Horsepower	T Trim & Tilt/ Power Trim & Tilt	L Lower Unit Shaft Length	R Control Method	A Model Year
C = C Series E = Enduro F = Four Stroke L = Left Hand P = Pro S = Saltwater T = Four Stroke High Thrust B = Inshore D = Twin Props V = VMAX	X = 0X66 Z = HPDI	Example: 6 9.9 200	T = Pwr Trim & Tilt with Electric Start  P = Pwr Tilt with Electric Start  E = Manual Tilt with Electric Start  M = Manual Tilt with Manual Start	S = 15" (UR Short) L = 20" (UR Long) X = 25" (UR Ultra Long) U = 30" (UR Super Ultra Long) J = Jet Drive Lower Unit  (UR = User Required)	R = Remote Control H = Tiller Handle	P = 1991 Q = 1992 R = 1993 S = 1994 T = 1995 U = 1996 V = 1997 W = 1998 X = 1999 Y = 2000 Z = 2001 A = 2002 B = 2003 C = 2004 D = 2005

## APRIL 2005 AND NEWER PRODUCTION MODEL NAME GUIDE

V Model Description	X Fuel Induction	150 Prop Shaft Horsepower	B New Model Designator	T Starting/Tilt Method	L Shaft Length	R Control Method
B = Inshore Series C = C Series D = Twin Propellers E = Enduro Series F = Four Stroke L = Counter Rotation P = Pro Series S = Saltwater Series T = High Thrust V = V MAX® Series Z = HPDI® (High Pressure Direct Injection)	F = Four Stroke X = OX66 Advanced Fuel Injection Z = HPDI® (High Pressure Direct Injection)	Example: 6 9.9 90 150 250 300	Any letter appearing between Prop Shaft Horsepower and Starting/Tilt Method is a "New Model Designator." Where used, these distinguish enhancement(s) to an existing outboard model sufficient to deem it a new model, or a completely new outboard that is a direct replacement of an existing outboard model.  Example: VZ300BTLR F9.9FMSH F15CPLH F40BTLR	T = Power Trim and Tilt Model with Electric Start P = Power Tilt with Electric Start E = Manual Tilt with Electric Start M = Manual Tilt with Manual Start	S = 15" L = 20" X = 25" U = 30" J = Jet Drive Unit	R = Remote Control H = Tiller Handle

**NOTE:** After 2005 model year production, new models being produced will no longer have the last letter of the model code which typically has designated "Model Year" (i.e. 90TLRD will now be 90TLR). Engines produced in April 2005 and later will require the complete PID (model code and serial number) to locate the proper service and parts information.



### Model Code Changes for F40 Models

In order to simplify Yamaha model codes and the introduction of new models, Yamaha has revised its model code designators (starting with this all-new engine). Please note that all other Yamaha engines will retain their current model codes until further notice.

<b>F</b> Fuel Induction	<b>40</b> Horsepower	<b>B</b> Model Code Designator	<b>T</b> Starting Method	<b>X</b> Shaft Length	<b>R</b> Control Method
F = Four-Stroke		B = 3 Star CARB Rating	T = PTT & E start P = PT & E start E = Electric start M = Manual start J = Jet	S = 15" L = 20" X = 25" U = 30"	R = Remote Control H = Tiller Handle



<b>F</b> Fuel Induction	<b>40</b> Horsepower	<b>L</b> Shaft Length	<b>E</b> Starting Method PTT	<b>H</b> Control Method	<b>A</b> Generation
F = Four-Stroke		S = 15" <b>L = 20"</b> X = 25" U = 30" J = Jet	Blank = PTT & E start P = PT & E start <b>E = Electric start</b> M = Manual start	Blank = Remote Control <b>H = Tiller Handle</b> C = Command Link Control	<b>A = 1st change on motor</b> B = 2nd change on motor C = 3rd change on motor Etc.

<b>F</b> Fuel Induction	<b>40</b> Horsepower	<b>L</b> Shaft Length	<b>E</b> Starting Method PTT	<b>H</b> Control Method	<b>A</b> Generation
F = Four-Stroke		S = 15" <b>L = 20"</b> X = 25" U = 30" J = Jet	<b>Blank = PTT &amp; E start</b> P = PT & E start E = Electric start M = Manual start	<b>Blank = Remote Control</b> H = Tiller Handle C = Command Link Control	<b>A = 1st change on motor</b> B = 2nd change on motor C = 3rd change on motor Etc.

<b>F</b> Fuel Induction	<b>40</b> Horsepower	<b>J</b> Shaft Length	<b>E</b> Starting Method PTT	<b>H</b> Control Method	<b>A</b> Generation
F = Four-Stroke		S = 15" L = 20" X = 25" U = 30" <b>J = Jet</b>	Blank = PTT & E start P = PT & E start <b>E = Electric start</b> M = Manual start	Blank = Remote Control <b>H = Tiller Handle</b> C = Command Link Control	<b>A = 1st change on motor</b> B = 2nd change on motor C = 3rd change on motor Etc.

<b>F</b> Fuel Induction	<b>40</b> Horsepower	<b>J</b> Shaft Length	<b>E</b> Starting Method PTT	<b>H</b> Control Method	<b>A</b> Generation
F = Four-Stroke		S = 15" L = 20" X = 25" U = 30" <b>J = Jet</b>	Blank = PTT & E start P = PT & E start <b>E = Electric start</b> M = Manual start	<b>Blank = Remote Control</b> H = Tiller Handle C = Command Link Control	<b>A = 1st change on motor</b> B = 2nd change on motor C = 3rd change on motor Etc.

Please note all other Yamaha outboard models will continue to use the current model code system at this time. "Generation" codes will change at such time new Yamaha outboards models are introduced. Model codes will utilize this new and simpler format at that time.